



FULGOR
MILANO

SINCE
PASSIONE ■ ITALIANA
1949

Collection Twelve

12



FULGOR
MILANO

SOFIA

PROFESSIONAL



POWERFUL ELEGANCE

Sofia is a solid, generously sized freestanding range with a clean and rigorous style. Designed, developed and engineered in Italy to exceed all expectations of quality, performance and style. Sofia will captivate the most discerning chef with nuanced features that are traditional yet innovative.

NEW

FULGOR
MILANO

SOFIA 48"

PRO INDUCTION WITH GRIDDLE

TRILAMINATE GRIDDLE

Functional and beautiful, our trilaminate griddle features a three layer construction. 304 stainless on the cooking surface, an aluminum mid layer for even heat distribution and another stainless layer on the bottom.

UNSURPASSED CRAFTSMANSHIP

Superior Italian steelmaking craftsmanship ensures perfectly polished edges and smooth corners, concealing screws and welds for an impeccable finish.

COOL TOUCH DOOR

4 layers of thermo-reflecting glass ensure the safety of a cool touch door while the oven is on - even at its highest temperature during the self-clean cycle.

CONVENIENCE OVEN

Identically featured as its larger mate, but without meat probe, this self-cleaning, multi function convection oven does everything in a smaller space, adding efficiency and flexibility. It even has a telescopic rack.



SEVEN INDUCTORS

The cooking surface features 7 powerful premium European inductors. 5 inductors under a continuous piece of ceramic glass with the same configuration, but also includes an integrated trilaminate griddle over a dedicated bridge element, which can allow for independent control for the front and back of the griddle or when put into bridge function provides control over the entire griddle with one knob.

DUAL OVENS

Two self-cleaning convection ovens with multiple baking functions allow for ultimate flexibility, performance and capacity. Telescopic chrome oven racks allow for convenient inspection of dishes during cooking and effortless removal when done.

SOFT CLOSING DOOR

Robust stainless oven doors with wide viewing windows get an assist from shock absorbing hinges, facilitating an effortless soft closing oven.

This masterfully designed 48" induction range is a first of a kind all-electric pro range alternative for those who prefer a traditional 48" range configuration with the built-in griddle feature. To add to the flexibility of this range, the trilaminate griddle can be removed to have access to the induction elements below. The instant response and precise control of the induction are ensured by the presence of professional control knobs. Below the cooking surface, two self-cleaning true convection ovens with intuitive multiple baking and broiling functions and the convenience of telescoping racks encourage you to cook the way you want.

Like all Sofia Pro ranges you can create your personalized nameplate for the oven door.

NEW

FULGOR
MILANO



SOFIA 48"

PRO INDUCTION ALL GLASS

This elegantly designed 48" induction range is our first all-electric pro range alternative for those who do not have access to gas or choose to go full electric. The cooking surface features 7 powerful premium European inductors under a continuous piece of ceramic glass adding to the elegant design. Not only does this layout feature the same beloved configuration of our 36" induction range but includes a dedicated bridge element, which when put into bridge function, allows one to combine both induction zones into one large zone for use with specialty cookware or an induction-capable griddle. The instant response and precise control of the induction are ensured by the presence of professional control knobs. Below the cooking surface, two self-cleaning true convection ovens with intuitive multiple baking and broiling functions and the convenience of telescoping racks encourage you to cook the way you want.

FULGOR
MILANO

SOFIA

36" INDUCTION PRO SOFIA RANGE



The Sofia 36" Induction Pro Range features a powerful premium induction technology under an elegant glass surface featuring the new 11" Dual Max Power burner. The instant response and precise control of the induction is controlled by the easy to use professional control knobs.

The wide glass, cool touch door is equipped with a soft closing feature of the oven.

The self-cleaning dual true convection oven offers an unsurpassed baking performance.

Sofia Induction Pro Ranges are available in 30" with 4 inducers, 36" with 5 inducers and 48" with 7 inducers.

48" DUAL FUEL

PRO SOFIA RANGE

THE ART OF COOKING EXPANDED

FULGOR
MILANO

Thoughtfully designed surface cooking with six burner positions, each with a 5 in 1 Crescendo burner beneath continuous cast iron grates and a Trilaminare Stainless Steel griddle, providing unparalleled power and control to melt, simmer, saute, and sear as you desire. Below the cooking surface, two self cleaning convection ovens with intuitive multiple baking and broiling functions and the convenience of telescoping racks encourages you to cook the way you want.



48" DUAL FUEL

PRO SOFIA RANGE CHARACTERISTICS

TRILAMINATE GRIDDLE

Functional and beautiful, our trilaminate griddle features a three layer construction. 304 stainless on the cooking surface, an aluminum mid layer for even heat distribution and another stainless layer on the bottom.

UNSURPASSED CRAFTSMANSHIP

Superior Italian steelmaking craftsmanship ensures perfectly polished edges and smooth corners, concealing screws and welds for an impeccable finish.

COOL TOUCH DOOR

4 layers of thermo-reflecting glass ensure the safety of a cool touch door while the oven is on - even at its highest temperature during the self-clean cycle.

CONVENIENCE OVEN

Identically featured as its larger mate, but without meat probe, this self-cleaning, multi function convection oven does everything in a smaller space, adding efficiency and flexibility. It even has a telescopic rack.



CAST IRON GRATES

Built to withstand searing heat and rapid temperature changes without losing their strength, continuous cast iron grates allow pans to be easily repositioned at your convenience.

SIX BURNERS

6 cooking zones, each with Crescendo burners create 5 levels of cooking power. At each level, the perfect combination of power and even distribution of heat allows precise results from temper to sear at 20,000 BTUs. A combination of burner rings at different levels controls the relation of the flame to the bottom of the cooking vessel, allowing whisper soft heat for melting or rendering to ultra high searing and deglazing.

DUAL OVENS

Two self-cleaning convection ovens with multiple baking functions allow for ultimate flexibility, performance and capacity. Telescopic chrome oven racks allow for convenient inspection of dishes during cooking and effortless removal when done.

SOFT CLOSING DOOR

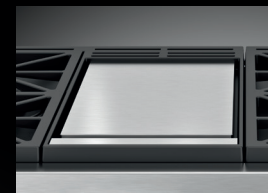
Robust stainless oven doors with wide viewing windows get an assist from shock absorbing hinges, facilitating an effortless soft closing oven.



FULGOR
MILANO

SOFIA 48" ALL GAS PRO SOFIA RANGE

Imagine all that you can create with the generous 48" All Gas Sofia Pro Range. With 6 crescendo burners and a trilaminate stainless steel griddle, the possibilities are endless. Give in to all your baking whims with two well appointed gas ovens. The main 30" multifunction oven features a large internal cavity and our new Nova Broiler system – the ultimate culinary experience is within your reach.



TRILAMINATE GRIDDLE

Functional and beautiful, our trilaminate griddle features a three layer construction. 304 stainless on the cooking surface, an aluminum mid layer for even heat distribution and another stainless layer on the bottom.



OVEN CONTROL

Sofia's digital control display allows you to monitor temperature levels in the 30" oven.



ITALIAN CRAFTSMANSHIP

Superior Italian steelmaking craftsman ensures perfectly polished edges and smooth corners, concealing screws and welds for an impeccable finish.



AUTOGRAPH YOUR KITCHEN

Visit the Fulgor Milano website to customize the nameplate of the oven door with your name. The complimentary plate will be delivered to your home.

NEW

SOFIA 36" PRO RANGE

WITH GRIDDLE DUAL FUEL OR ALL GAS

Both the all-new 36" dual fuel and all gas range with griddle feature a thoughtfully designed cooking surface with 4 burners and a central griddle. Each burner features our 5 in 1 Crescendo burner beneath our continuous heavy duty cast-iron grates with the same Trilaminate Stainless Steel griddle as our 48" ranges, providing unparalleled flexibility in a 36" range. The Crescendo burner has the power to sear, sauté, boil but also, the control to temper and simmer the most delicate dishes.

Below the cooking surface of the 36" dual fuel you will find a large self-cleaning electric dual true convection oven with intuitive multiple baking and broiling functions and the convenience of telescoping rack encourages you to cook the way you want.

The heart of Sofia 36" all gas is her oven with dual convection and the Nova Broiler system's intense heat sears meats perfectly, locking in juices. The large broiling area coupled with the ventilation allows for closed door broiling, which ensures constant cooking.

Both ovens feature commercial style racks, multi-level lighting, and a full-extension rack with stainless glides.

Like all Sofia ranges you can create your personalized nameplate and choose a one of the optional accessory color kits to have a truly personalized look.



COLOR KIT

PERSONALIZE WITH COLOR

FREEDOM TO CHOOSE COLOR



CANOVA
WHITE
MATTE WHITE
RAL 9016

BLACK
VELVET
MATTE BLACK
RAL 9004

RIALTO
GREY
MATTE GREY
RAL 9007 "SLATE"

GONDOLA
BLACK
GLOSSY BLACK
RAL 9004

VENETIAN
RED
GLOSSY RED
RAL 3003

PALLADIO
WHITE
GLOSSY WHITE
RAL 9016

Your cooking style is personal and now you can easily personalize your kitchen with color. Dress Sofia in vibrant Venetian Red, brilliant Palladio White, glistening Gondola Black, sumptuous Black Velvet, glistening Rialto Grey or delicate Canova White. With a Sofia Color Kit, making a change is a breeze, simply replace the door and one piece toe-kick whenever the mood strikes you. Sofia can even change with the seasons to make your kitchen alive with color.

AUTOGRAPH YOUR KITCHEN

MAKE IT EXCLUSIVELY YOURS!



Customize your Sofia kitchen with your name and choice of font. Visit the Fulgor Milano website to create your personalized name plate for the oven door. The complimentary plate will be delivered to your home where your unique Sofia kitchen is exclusively yours.



FULGOR
MILANO

SOPIA

PRO GAS RANGETOP



Style and performance are the most appropriate description for the Professional Rangetop. The combination of solid materials and efficient technologies allows us to offer versatile and functional solutions. The sturdiness of the stainless steel structure, combined with the heavy duty continuous grates of the gas versions, the perfectly matte burner basin, the steel knobs with the modulation of the maximum power levels to that for simmer cooking of the Crescendo gas burners offer those who appreciate infinite possibilities to cook recipes like a chef.

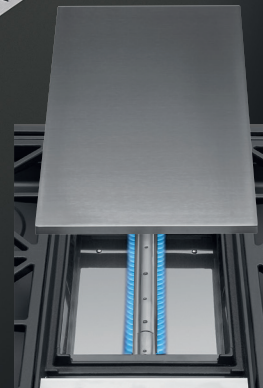
Pro Gas Rangetops are available in both 36" and 48" configurations with a trillaminate griddle, and in 30" and 36" configurations with either 4 or 6 Dual Flame Crescendo respectively.

FULGOR
MILANO

SOFIA

PRO GAS 48" RANGETOP

This product has all the features one would expect from a truly pro style cook top, starting with its gas powered trilaminate griddle, and 6 Crescendo dual flame burners. Each burner providing the perfect combination of power and even distribution of heat allows precise results from temper to sear with a maximum 20,000 BTUs. The combination of inner and outer burner rings are easily controlled with the pro style knobs which can allow everything from a whisper soft heat for melting or rendering chocolate, to instantly activating both rings and providing ultra high temperatures for searing and boiling



TRILAMINATE GRIDDLE

Our trilaminate griddle is functional and beautiful; two unique types of stainless steel, chosen for durability and easy cleaning, form a three layer griddle with the addition of aluminum for even and consistent heat distribution.



CAST IRON GRATES

Built to withstand searing heat and rapid temperature changes without losing their strength, continuous cast iron grates allow pans to be easily repositioned at your convenience.



PORCELAIN BURNER BASIN

The elegant yet robust continuous grates sit atop the one piece burner bowl, with its smooth corners and velvet matte black porcelain finish, allowing for seamless, easy cleaning.

PRO 48" INDUCTION RANGETOP WITH GRIDDLE

The Sofia induction rangetop features powerful premium induction technology under an elegant glass surface featuring a new 11" Dual Max Power burner (48" model).

The instant response and precise control of induction is highlighted by the Digital Minute Minder control, paired beautifully with the easy to clean surface, offering maximum performance while minimizing energy consumption.

Pro Rangetop is available in sizes 48" all glass and 48" with a trilaminate griddle.

DUAL MAX POWER

Large pans receive full power for capacity and consistent heat distribution while cooking. The 11" Dual Induction Zone offers a fifth burner for any size pan at any power level for ultimate flexibility.

PROFESSIONAL STYLE KNOBS

Can a professional rangetop be called that without pro style knobs? Fulgor Milano was not willing to compromise on this expectation, while still offering all of the unique functions and technologies expected from an induction cooktop.

INDUCT. SPECIFIC ISLAND TRIM

We specifically designed an elegant low profile island trim for our induction rangetop to match the same profile of our Sofia control panel.



TRILAMINATE GRIDDLE

Functional and beautiful, our trilaminate griddle features a three layer construction. 304 stainless on the cooking surface, an aluminum mid layer for even heat distribution and another stainless layer on the bottom.

SEVEN INDUCTORS

The cooking surface features 7 powerful premium European inductors. 5 inductors under a continuous piece of ceramic glass with the same configuration, but also includes an integrated trilaminate griddle over a dedicated bridge element, which can allow for independent control for the front and back of the griddle or when put into bridge function provides control over the entire griddle with one knob.

NEW

FULGOR
MILANO

PRO 48" INDUCTION RANGETOP ALL GLASS

The cooking surface features 7 powerful premium European inductors under a continuous piece of ceramic glass adding to the elegant design. This RangeTop includes a dedicated bridge element, which when put into bridge function, allows one to combine both induction zones into one large zone for use with specialty cookware or an induction-capable griddle. The instant response and precise control of the induction are ensured by the presence of professional control knobs.

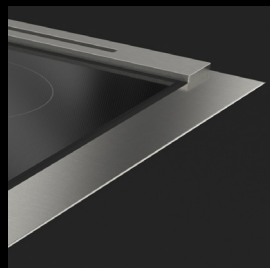
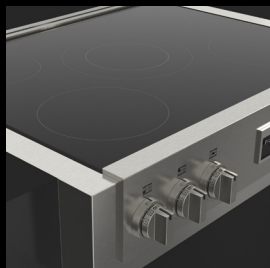


SOFIA

PRO INDUCTION 36" RANGETOP

The Sofia induction rangetop features powerful premium induction technology under an elegant glass surface featuring a new 11" Dual Max Power burner (36" model). The instant response and precise control of induction is highlighted by the Digital Minute Minder control, paired beautifully with the easy to clean surface, offering maximum performance while minimizing energy consumption.

The Sofia Induction Professional Rangetop is also available in the 30" size, with 4 large induction cooking zones.



DUAL MAX POWER

Large pans receive full power for capacity and consistent heat distribution while cooking. The 11" Dual Induction Zone offers a fifth burner for any size pan at any power level for ultimate flexibility.

PROFESSIONAL STYLE KNOBS

Can a professional rangetop be called that without pro style knobs? Fulgor Milano was not willing to compromise on this expectation, while still offering all of the unique functions and technologies expected from an induction cooktop.

INDUCT. SPECIFIC ISLAND TRIM

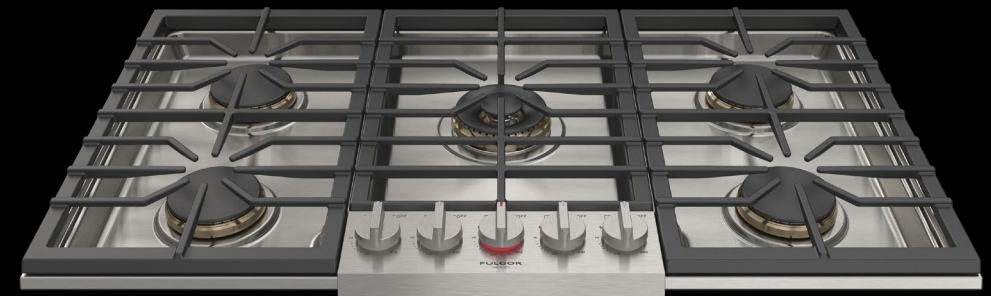
We specifically designed an elegant low profile island trim for our induction rangetop to match the same profile of our Sofia control panel.



FULGOR
MILANO

SOFIA

COOKTOP 36" PRO GAS



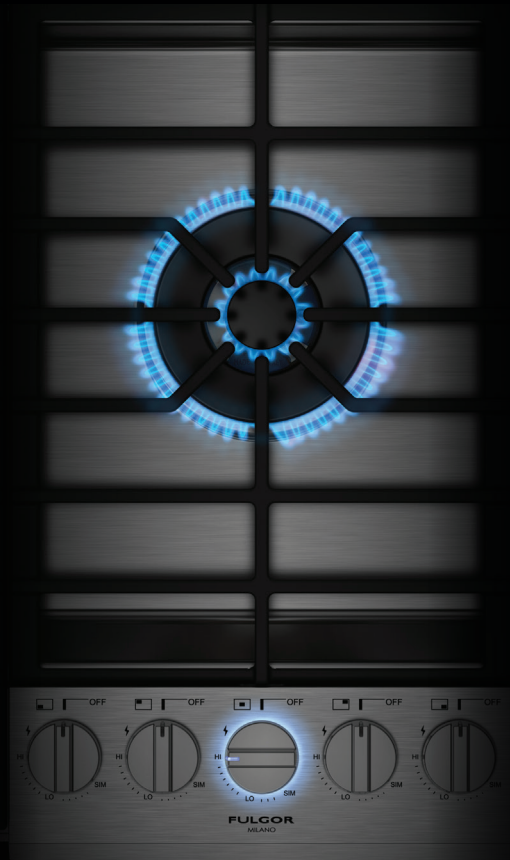
STRONG, POWERFUL, DISTINCTIVE

With sleek lines, a continuous surface grate over powerful brass burners, and LED illuminated controls, the Sofia cooktop combines elegant design, responsive performance, and thoughtful convenience. Sofia enters a new realm with this low profile cooktop allowing design flexibility for your kitchen. Enjoy the power of a 20,000 BTUs Dual Brass Burner of this Sofia cooktop while using the additional 4 Dual Stack Burners, designed to surpass all of your expectations. New Halo Effect knobs let you know at a glance if the gas is on or if the cooktop was recently used, giving you peace of mind at every turn. Continuous cast iron grates offer an even cooking surface for easy movement of pans from burner to burner so that even your biggest cooking events can be handled with ease.

The Sofia Professional Cooktop is also available in the 30" size.

HALO VISION

HEAT MADE VISIBLE



HALO WHITE for when the gas is on

Have you ever walked away from your cooktop forgetting a burner is on? Whether you are searing a steak or tempering chocolate, the glowing halo of white light will alert you to a burner that is on. Walk away from the kitchen with confidence, knowing that your burners are safely off when the halo disappears.

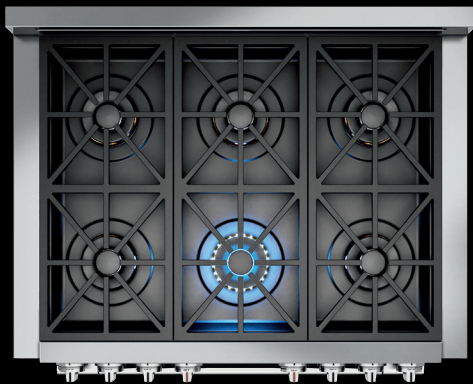


HALO RED residual heat indicator

A Professional cooktop would not be complete without powerful burners and strong cast iron grates. These grates can continue to radiate a heat, even after the burner is off. A red Halo light will emanate for a short period of time around the control knob indicating it was recently used.

5 in 1

CRESCENDO BURNER



Because precision is important for powerful high and gentle low flames, our sealed burners offer five combinations of flame configurations for near infinite control. Durable brass burner rings provide exceptional heat distribution to the base of the cooking vessel at its maximum output of 20,000 BTUs and is also capable of the gentlest simmer aided by its oversized burner cap.



FORTE

1

At the peak of its 20,000 BTUs capability, meat is seared to produce a crust worthy of your favorite chef. Large pots quickly recover to a rigorous boil, and no culinary conquest seems unattainable. All burner rings engage to produce the most powerful flame for cooking.



MEZZOFORTE

2

Perfect al dente pasta is a snap. Progressive control of the burner ensures maximum heat distribution without excessive flame for an even and moderate boil.



MEZZO

3

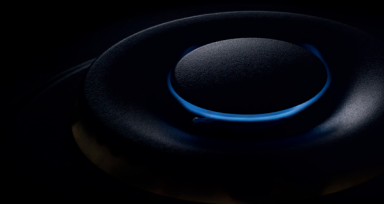
Creamy risotto and smooth custards come to life as the burner rings combine to provide enough heat to encourage the cooking but discourage scorching.



PIANOFORTE

4

Simmer, poach, or braise your way to a tender sauce, soup or stew. Flame curls around the diffuser cap to barely brush the base of the cooking vessel with perfect control for extended periods of low heat cooking.



PIANO

5

Melt butter, temper chocolate, or gently coax the flavor from savory vegetables, this lowest setting is achieved by the flame from the simmer burner rolling gently under the diffuser cap to radiate whisper soft heat.



FULGOR
MILANO

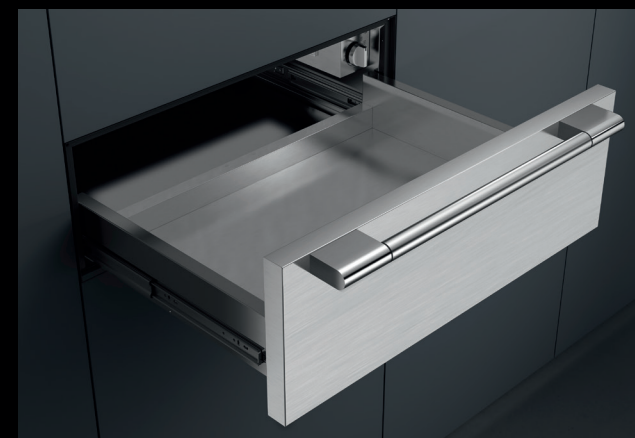
SOFA

PROFESSIONAL 30" DOUBLE OVEN



WARMING DRAWER

With striking beauty and bold performance, the Sofia professional double oven features dual true convection, cool touch soft-close doors, concealed bake elements, and multiple cooking modes ensures you can handle whatever culinary challenges come your way. From defrost to intensive broiling and everything in between, there is no cooking task this oven can't handle. A meat probe in the upper oven ensures perfect results for your roasts. Self-clean in each oven means your oven will remain beautiful and functional throughout its life.



FULGOR
MILANO

SOFIA 30"

CUSTOMIZABLE TOWER OF POWER

Combine any one of our specialty ovens or built in coffee machines with our professional single oven and warming drawer and achieve the ultimate built-in tower. These specialty products are all designed to give you complete flexibility while maintaining a consistent look.



PRO STEAM OR SPEED OVEN

Choose between our combination steam oven or combination speed oven. Use the power and health benefits of steam cooking, or choose the convenience of reducing cooking times with combination speed oven.

PRO OVEN

A self-cleaning convection oven with multiple baking functions allows for ultimate flexibility and performance. Telescopic chrome oven racks allow for convenient inspection of dishes during cooking and effortless removal when done.

WARMING DRAWER

More than a warming drawer, this functional appliance can slow cook, proof, leaven, and defrost in its compact and fully enclosed space. Use as a warming drawer for plates, holding side dishes at serving temperature, the possibilities are endless.



FULGOR
MILANO

SOFIA

30" SPECIALTY OVENS

SPEED OVEN

A premium kitchen is not complete without a combi speed oven. Microwave, bake, broil, or use any of the combination cook modes to enjoy the benefits of speed cooking. Enjoy all the benefits of our combi speed steam oven without compromising the look of your Sofia built-in appliances.

STEAM OVEN

Have you considered the benefits of cooking with steam? Steam, bake, broil, or use one of the combination cooking modes and achieve beautiful and healthy results. Enjoy all the benefits of our combi steam oven without compromising the look of your Sofia built-in appliances.



FULGOR
MILANO

SOFIA

30" PRO COFFEE MACHINE

Our built-in coffee machine is your personal barista: from storing coffee beans to grinding fresh beans for brewing, to automatically storing puck-grounds into the waste tray. Enjoy barista-style coffee, from espresso to cappuccino, and your favorite Americano at the touch of a button right at home. This easy-to-use, made in Italy professional quality unit is the perfect complement to your Fulgor Milano cooking products. Shown here with our unique 30" Pro frame kit it matches perfectly when installed over our other 30" Sofia built-in products.



EASY TO USE TOUCH CONTROL

Allows for complete control over the numerous functions available with this unit. Some key features include: Cup Size, Coffee Strength, Auto Cappuccino Mode, Hot Water Dispenser, Auto-Start Mode, Auto-Off Mode, Temperature Customization, Empty Grounds & Fill Water Tank Message, Multi-Lingual LCD Display, Time of Day Clock and the list goes on.

30" PRO-STYLE FRAME KIT

Although our automatic built-in coffee machines come standard in either a 24" black glass or 24" stainless finish, and an optional 30" professional style frame kit is available. This unique frame kit allows our unit to be installed in combination with our other 30" built-in pro products. For a final touch, consumers have the choice to place an optional pro badge on the face of the unit.

EASY MAINTENANCE

All automatic built-in coffee machines require regular cleaning and maintenance. The easier the process, the more time you will have to enjoy your barista-quality coffee. Our unit's dishwasher-safe waste tray is front-accessible, along with our easy to use removable water tank. Why a removable tank? So you can add fresh water every day. We believe fresh water is as important as freshly ground beans. Plumbed units cannot guarantee this.

FULGOR
MILANO

SOFIA

PREMIUM BUILT-IN REFRIGERATION & WINE

COLD TEMP. TOTAL CONTROL

As beautiful as it is functional, the Sofia Professional Refrigeration and Wine Series features brushed stainless exteriors for maximum impact and a brilliant white aluminum interior. Food preservation is key and like the rest of the Professional Series, we combine the latest technology to ensure the highest performance. Dual compressors provide independently controlled cooling zones with consistent and precise temperatures throughout, to ensure that the finest foods and wines stay fresher longer. Robust doors on the Refrigeration and triple layer UV protected glass on the Wine Cellar protect contents from external temperature and humidity changes which can be damaging to your stored items.



NEW

FULGOR
MILANO

Fulgor Milano now features a full line of premium built in column food and wine preservation. Completely customize your experience with a variety of sizes and configuration of fridge, freezer and wine columns.

FRIDGE, FREEZER & WINE COLUMNS

TWO UNIQUE STYLES

Our columns are available in two configurations, custom overlay and cladless stainless with matching pro handle. You can choose to completely disguise these beautiful units into your kitchen design with the use of overlay matching panels, or go with the elegant stainless finish to match your Sofia range

ENDLESS POSSIBILITIES

Combine as many or as few units as you want. Your kitchen design may call for stand alone units to book end a galley, or combine as many units as you wish for the ultimate preservation system. Our unique hinge design allows multiple units to be installed together ensuring proper door swing and a minimal tolerance to adjacent units and cabinets.

SPACIOUS AND DURABLE

Fulgor Milano columns are built to last. Each unit is designed and built in Italy using commercial style techniques and materials. The elegant and vibrant metal interior features LED lighting which is both efficient and effective, full extension stainless steel crisper drawers and hardware in the fridge and full metal drawers in the freezer.



The Fulgor Milano freestanding counter depth French-door unit opens wide to reveal features like an internal water dispenser, adjustable fresh zone drawer, tri-level slide-out freezer baskets and self-closing freezer drawer.

FRENCH DOOR REFRIGERATOR

COUNTER-DEPTH STYLE

Limited on space and can't fit a full height built-in fridge, or simply want to have the look without blowing the budget? The new Fulgor Milano counter-depth fridge allows you to achieve a beautiful look without compromise.



PRO HANDLE KIT

Once the Pro Handle Kit with Pro Fulgor Milano badge is installed, our counter-depth french door fridge is a perfect complement to any of our professional ranges or professional built-in cooking appliances.





FULGOR
MILANO

SOFIA

PRO VENTILATION

Complete your powerful Sofia cooking suite with a matching wall mounted ventilation hood designed to keep your kitchen environment free from smoke, cooking residue, and excess heat. The dual motor, in a sturdy housing, combines with Pro Baffle filters to quietly whisk away the effects of your culinary adventures. Your hood allows fresh air to circulate freely in your home, while overhead LED illumination highlights evenly your Sofia cooking surface. To ensure full control of your hood, we have designed this appliance to be controlled with the aid of Professional control knobs. Like jewelry for your home, Sofia's ventilation hoods offer the very best of function and design. Your well ventilated kitchen will thank you for it!

48" HOOD



48" CHIMNEY HOOD





DUAL FUEL RANGE 48"
6 Dual-Flame Crescendo Burners
Trilaminate Stainless Steel Griddle
3 Heavy Duty, continuous cast iron grates
Dual True Convection ovens
Cool to the touch, soft closing door
Self-cleaning with Multifunction baking

CODE ID **F6PDF486GS1**



NEW DUAL FUEL RANGE 36" GRIDDLE
4 Dual-Flame Crescendo Burners
2 Heavy Duty, continuous cast iron grates
Trilaminate Stainless Steel Griddle
Dual True Convection oven
Cool to the touch, soft closing door
Self-cleaning with Multifunction baking

CODE ID **F6PDF364GS1**



DUAL FUEL RANGE 36"
6 Dual-Flame Crescendo Burners
3 Heavy Duty, continuous cast iron grates
Dual True Convection oven
Cool to the touch, soft closing door
Self-cleaning with Multifunction baking

CODE ID **F6PDF366S1**



DUAL FUEL RANGE 30"
4 Dual-Flame Crescendo Burners
2 Heavy Duty, continuous cast iron grates
Dual True Convection oven
Cool to the touch, soft closing door
Self-cleaning with Multifunction baking

CODE ID **F6PDF304S1**



ALL GAS RANGE 48"
6 Dual-Flame Crescendo Burners
Trilaminate Stainless Steel Griddle
3 Heavy Duty, continuous cast iron grates
Double Dual Convection Gas Ovens
Oven temperature electronic control
Cool to the touch, soft closing door

CODE ID **F6PGR486GS2**



NEW ALL GAS RANGE 36" GRIDDLE
4 Dual-Flame Crescendo Burners
2 Heavy Duty, continuous cast iron grates
Trilaminate Stainless Steel Griddle
Dual Convection oven
Nova Broiler System
Cool to the touch - Soft closing door

CODE ID **F6PGR364GS2**



ALL GAS RANGE 36"
6 Dual-Flame Crescendo Burners
3 Heavy Duty, continuous cast iron grates
Dual Convection oven
Oven temperature electronic control
Nova Broiler System
Cool to the touch - Soft closing door

CODE ID **F6PGR366S2**



ALL GAS RANGE 30"
4 Dual-Flame Crescendo Burners
2 Heavy Duty, continuous cast iron grates
Dual Convection oven
Oven temperature electronic control
Nova Broiler System
Cool to the touch - Soft closing door

CODE ID **F6PGR304S2**



GAS RANGE TOP 48"
6 Dual-Flame Crescendo Burners
Trilaminate Stainless Steel Griddle
3 Heavy Duty, continuous cast iron grates
2 X 20k BTU Max (NG)
4 X 18k BTU Max (NG)
1 X 11.500K BTU max (NG) Griddle

CODE ID **F6GRT486GS1**



NEW GAS RANGE TOP 36" GRIDDLE
4 Dual-Flame Crescendo Burners
Trilaminate Stainless Steel Griddle
2 Heavy Duty, continuous cast iron grates
2 X 20k BTU Max (NG)
2 X 18k BTU Max (NG)
Natural Gas (LP convertible)

CODE ID **F6GRT364GS1**



GAS RANGE TOP 36"
6 Dual-Flame Crescendo Brass Burners
3 Heavy Duty, continuous cast iron grates
One piece, matte finish porcelain burner bowl
2 X 20k BTU Max (NG)
4 X 18k BTU Max (NG)
Natural Gas (LP convertible)

CODE ID **F6GRT366S1**



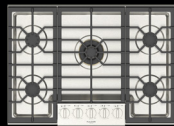
GAS RANGE TOP 30"
2 Heavy Duty, continuous cast iron grates
One piece, matte finish porcelain burner bowl
4 Dual-Flame Crescendo Brass Burners
1 X 20,000 BTU Max (NG)
3 X 18,000 BTU Max (NG)
Natural Gas (LP convertible)

CODE ID **F6GRT304S1**



PRO GAS COOKTOP 36"
3 Heavy duty continuous cast iron grates
Heavy Gauge 304 Stainless Steel Bowl
1 Brass Dual Flame Burner 20K BTU Max (NG)
4 Brass Stacked Burners 15K BTU Max (NG)
Halo Vision - Backlit Control Knobs
Heavy duty control panel - Large cooking are

CODE ID **F6PGK365S1**



NEW PRO GAS COOKTOP 30"
3 Heavy duty continuous cast iron grates
Heavy Gauge 304 Stainless Steel Bowl
1 Brass Dual Flame Burner 20K BTU Max (NG)
2 Brass Semirapid Burners 8K BTU Max (NG)
2 Brass Semirapid Burners 6.3K BTU Max (NG)
Halo Vision - Backlit Control Knobs

CODE ID **F6PGK305S2**



NEW INDUCTION RANGE 48"
Knob Controlled
4 Single Induction cooking zones
1 Dual Max Power with Ø 11" zone
1 integrated trillaminate Griddle over a dedicated 2-zone bridge element
Self-cleaning, Dual True Convection ovens
Cool to the touch, soft closing door
CODE ID **F6PIR485GS1**



NEW INDUCTION RANGE 48"
Knob Controlled
4 Single Induction cooking zones
1 Dual Max Power with Ø 11" zone
1 dedicated 2-zone bridge element
Self-cleaning, Dual True Convection ovens
Cool to the touch, soft closing door
CODE ID **F6PIR487S1**



INDUCTION RANGE 36"
4 Single Induction cooking zones
1 Dual Max Power with Ø 11" zone
Dual True Convection oven
Cool to the touch, soft closing door
Self-cleaning with Multifunction baking
CODE ID **F6PIR365S1**



INDUCTION RANGE 30"
4 Single Induction cooking zones
Elegant Ceramic glass surface
Dual True Convection oven
Cool to the touch, soft closing door
Self-cleaning with Multifunction baking
CODE ID **F6PIR304S1**



NEW INDUCTION RANGE TOP 48"
4 Single Induction cooking zones
1 Dual Max Power with Ø 11" zone
1 integrated trillaminate Griddle over a dedicated 2-zone bridge element
Residual heat and Power on Indicators
Digital Display for Power Level
CODE ID **F6IRT485GS1**



NEW INDUCTION RANGE TOP 48"
4 Single Induction cooking zones
1 Dual Max Power with Ø 11" zone
1 dedicated 2-zone bridge element
Residual heat and Power on Indicators
Digital Display for Power Level
CODE ID **F6IRT487S1**



INDUCTION RANGE TOP 36"
4 Single Induction cooking zones
1 Dual Max Power with Ø 11" zone
Booster function for each cooking zone
Residual heat and Power on Indicators
Digital Display for Power Level
CODE ID **F6IRT365S1**



INDUCTION RANGE TOP 30"
4 Single Induction cooking zones
Elegant Ceramic glass surface
Booster function for each cooking zone
Residual heat and Power on Indicators
Digital Display for Power Level
CODE ID **F6IRT304S1**



DOUBLE OVEN 30"
Knob and electronic controls
Dual True Convection - 3 Halogen lights
Self-cleaning oven with Multifunction baking
Cool to the touch, soft closing door
Extra-large baking cavity and viewing area
Gross capacity 4.4 cu. ft. per oven
CODE ID **F6PDP30S1**



SINGLE OVEN 30"
Knob and electronic controls
Dual True Convection - 3 Halogen lights
Self-cleaning oven with Multifunction baking
Cool to the touch, soft closing door
Extra-large baking cavity and viewing area
Gross capacity 4.4 cu. ft.
CODE ID **F6PSP30S1**



WARMING DRAWER 30"
Heavy Duty full extendable telescopic rails
Convection heating system
All stainless steel structure
Warming Temp. range; 86 °F - 190 °F
Slow closing assistance
Large capacity - 2 Internal lights
CODE ID **F6PWD30S1**



SPEED OVEN 30"
3 in 1 Oven - Microwave, Convection, and Combi
Stainless Interior with broiler
Quick Access Menu
Automatic Programs
CODE ID **F6PSPD30S1**



STEAM OVEN 30"
3 in 1 Oven - Steam, Convection, and Combi-steam
Stainless Interior with broiler
Quick Access Menu
Automatic Programs
Meat Probe
CODE ID **F6PSCO30S1**



BUILT-IN COFFEE MACHINE 30"
30" Pro Style Frame Kit
Whole Bean Coffee Grinder
Dual Boiler, Dual Dispensing Spouts
Coffee/Esspresso Brewing
Cappuccino Option
Frothing System / Hot Water Dispenser
CODE ID **F7BC24B1 + F6PTK30BC**



PROFESSIONAL HOOD 48"
Scotch brite stainless steel (AISI 430)
Heavy Duty Control Panel with Knobs
Double fan motors -1000 CFM
4 + 4 Speed Mechanical Control
LED lighting Led 6 x - 3200 K
Baffle filter

CODE ID **F6PH48DS1**



PROFESSIONAL HOOD 36"
Scotch brite stainless steel (AISI 430)
Heavy Duty Control Panel with Knobs
Double fan motors - 1000 CFM
4 + 4 Speed - Mechanical Control
LED lighting - Led 4x - 3200 K
Baffle filter

CODE ID **F6PH36DS1**



PROFESSIONAL HOOD 30"
Scotch brite stainless steel (AISI 430)
Heavy Duty Control Panel with Knobs
One fan motor - CFM max 600
4 Speed - Mechanical Control
LED lighting: Led 4x1.2 W - 3200 K
Baffle filter

CODE ID **F6PH30S2**



PRO CHIMNEY HOOD 48"
Scotch Brite Stainless Steel (AISI 430)
3 Knobs Control
Double fan motors - 1000 CFM
Baffle Filter
6 LED lighting

CODE ID **F6PC48DS1**



PRO CHIMNEY HOOD 36"
Scotch Brite Stainless Steel (AISI 430)
3 Knobs Control
Double fan motors - 1000 CFM
Baffle Filter
4 LED lighting

CODE ID **F6PC36DS1**



INSERT HOOD 48"
Scotch brite stainless steel (AISI 430)
Heavy Duty Control Panel with Knobs
Double fan motors - 1000 CFM
4 + 4 Speed - Mechanical Control
LED lighting: Led 6x1.2 W - 3200 K
Baffle filter

CODE ID **F6BP46DS1**



INSERT HOOD 36"
Scotch brite stainless steel (AISI 430)
Heavy Duty Control Panel with Knobs
Double fan motors - 1000 CFM
4 + 4 Speed - Mechanical Control
LED lighting: Led 4x1.2 W - 3200 K
Baffle filter

CODE ID **F6BP34DS1**



WINE CELLAR 24"

Wine Cellar - 36 bottles
Cave Storage - 18 bottles
TriplePlay Refrigeration
Total No Frost
Flexzone Bottom Drawer
Brilliant white aluminium interior
LED Lighting

CODE ID **F7PBW24S1-R** (R DOOR)
CODE ID **F7PBW24S1-L** (L DOOR)



FRIDGE 36"

Fridge Compartment
Flexzone Bottom Drawer
Total No Frost
Stainless Steel Crisper Drawers
Ice Maker with ice tray
Brilliant white aluminium interior
LED Lighting

CODE ID **F7PBW36S1-R** (R DOOR)
CODE ID **F7PBW36S1-L** (L DOOR)



FRENCH DOOR FRIDGE 36"
with **PROFESSIONAL HANDLE KIT**

Duo Cycling Cooling / Ion Fresh
Inner Digital Display, Sabbath Mode
Large Pantry Drawer
Height Adjustable Cantilever Shelves
Interior Filtered Water Dispenser
Interior Theatre Lighting with LED lights
Automatic Ice Machine

CODE ID **F6FBM36S2 + F6HK36FFBS**



BUILT-IN WINE CELLAR 24"

Wine Cellar - 36 bottles
Cave Storage - 18 bottles
TriplePlay Refrigeration
Total No Frost
Flexzone Bottom Drawer
Brilliant white aluminium interior
LED Lighting

CODE ID **F7IBW24O1-R** (R DOOR)
CODE ID **F7IBW24O1-L** (L DOOR)



BUILT-IN FRIDGE 36"

Fridge Compartment
Flexzone Bottom Drawer
Total No Frost
Stainless Steel Crisper Drawers
Ice Maker with ice tray
Brilliant white aluminium interior
LED Lighting

CODE ID **F7IBM36O1-R** (R DOOR)
CODE ID **F7IBM36O1-L** (L DOOR)



NEW 36" FRIDGE COLUMN
with PROFESSIONAL HANDLE KIT
Stainless Steel Exterior
Microbeaded stainless steel crisper
drawers with soft closing
Height adjustable glass shelves
Luminous white interior
Multilevel LED lighting

CODE ID **F7SRC36S1-R** (R DOOR)
CODE ID **F7SRC36S1-L** (L DOOR)



NEW 30" FRIDGE COLUMN
with PROFESSIONAL HANDLE KIT
Stainless Steel Exterior
Microbeaded stainless steel crisper
drawers with soft closing
Height adjustable glass shelves
Luminous white interior
Multilevel LED lighting

CODE ID **F7SRC30S1-R** (R DOOR)
CODE ID **F7SRC30S1-L** (L DOOR)



NEW 24" FRIDGE COLUMN
with PROFESSIONAL HANDLE KIT
Stainless Steel Exterior
Microbeaded stainless steel crisper
drawers with soft closing
Height adjustable glass shelves
Luminous white interior
Multilevel LED lighting

CODE ID **F7SRC24S1-R** (R DOOR)
CODE ID **F7SRC24S1-L** (L DOOR)



NEW 30" FREEZER COLUMN
with PROFESSIONAL HANDLE KIT
Stainless Steel Exterior
Total No Frost
Height adjustable glass shelves
Metal freezer bins on stainless steel glides
Icemaker with ice tray
Luminous white interior
Multilevel LED lighting

CODE ID **F7SFC30S1-R** (R DOOR)
CODE ID **F7SFC30S1-L** (L DOOR)



NEW 24" FREEZER COLUMN
with PROFESSIONAL HANDLE KIT
Stainless Steel Exterior
Total No Frost
Height adjustable glass shelves
Metal freezer bins on stainless steel glides
Icemaker with ice tray
Luminous white interior
Multilevel LED lighting

CODE ID **F7SFC24S1-R** (R DOOR)
CODE ID **F7SFC24S1-L** (L DOOR)



NEW 18" FREEZER COLUMN
with PROFESSIONAL HANDLE KIT
Stainless Steel Exterior
Total No Frost
Height adjustable glass shelves
Metal freezer bins on stainless steel glides
Icemaker with ice tray
Luminous white interior
Multilevel LED lighting

CODE ID **F7SFC18S1-R** (R DOOR)
CODE ID **F7SFC18S1-L** (L DOOR)



NEW 36" FRIDGE COLUMN
Panel Ready Exterior
Microbeaded stainless steel crisper
drawers with soft closing
Height adjustable glass shelves
Luminous white interior
Multilevel LED lighting

CODE ID **F7IRC36O1-R** (R DOOR)
CODE ID **F7IRC36O1-L** (L DOOR)



NEW 30" FRIDGE COLUMN
Panel Ready Exterior
Microbeaded stainless steel crisper
drawers with soft closing
Height adjustable glass shelves
Luminous white interior
Multilevel LED lighting

CODE ID **F7IRC30O1-R** (R DOOR)
CODE ID **F7IRC30O1-L** (L DOOR)



NEW 24" FRIDGE COLUMN
Panel Ready Exterior
Microbeaded stainless steel crisper
drawers with soft closing
Height adjustable glass shelves
Luminous white interior
Multilevel LED lighting

CODE ID **F7IRC24O1-R** (R DOOR)
CODE ID **F7IRC24O1-L** (L DOOR)



NEW 30" FREEZER COLUMN
Panel Ready Exterior
Total No Frost
Height adjustable glass shelves
Metal freezer bins on stainless steel glides
Icemaker with ice tray
Luminous white interior
Multilevel LED lighting

CODE ID **F7IFC30O1-R** (R DOOR)
CODE ID **F7IFC30O1-L** (L DOOR)



NEW 24" FREEZER COLUMN
Panel Ready Exterior
Total No Frost
Height adjustable glass shelves
Metal freezer bins on stainless steel glides
Icemaker with ice tray
Luminous white interior
Multilevel LED lighting

CODE ID **F7IFC24O1-R** (R DOOR)
CODE ID **F7IFC24O1-L** (L DOOR)



NEW 18" FREEZER COLUMN
Panel Ready Exterior
Total No Frost
Height adjustable glass shelves
Metal freezer bins on stainless steel glides
Icemaker with ice tray
Luminous white interior
Multilevel LED lighting

CODE ID **F7IFC18O1-R** (R DOOR)
CODE ID **F7IFC18O1-L** (L DOOR)



NEW 24" WINE CELLAR COLUMN
with PROFESSIONAL HANDLE KIT

Stainless Steel Exterior
Two temperature zones
12 Natural wood shelves for 80 bottle total storage capacity
Luminous white interior
Multilevel LED lighting

CODE ID **F7SWC24S1-R** (R DOOR)
CODE ID **F7SWC24S1-L** (L DOOR)



NEW 24" WINE CELLAR COLUMN

Panel Ready Exterior
Two temperature zones
12 Natural wood shelves for 80 bottle total storage capacity
Luminous white interior
Multilevel LED lighting

CODE ID **F7IWC24O1-R** (R DOOR)
CODE ID **F7IWC24O1-L** (L DOOR)



S. STEEL BUILT-IN DISHWASHER 24"
with PROFESSIONAL HANDLE KIT

16 Place Settings / 6 Programs
45 dBA Silent Operations
Flexible Rack Loading
All-In-One single tablet Detergent Function
Fast Function, 5 Level Wash
Flow Through Heater
3 way Euro Filtering System

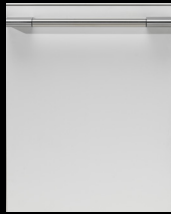
CODE ID **F6DWT24SS2 + F6UHK24DISH**



S. STEEL BUILT-IN DISHWASHER 24"
with PROFESSIONAL HANDLE KIT

14 Place Settings
6 Programs
49 dB(A)
Super active drying
4 Foldable racks on upper basket
Flow-Through Heater
3 way Euro Filtering System

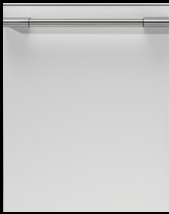
CODE ID **F4DWT24SS1 + F6UHK24DISH**



OVERLAY DISHWASHER 24"
with PROFESSIONAL HANDLE KIT

14 Place Settings
6 Programs
49 dB(A)
Super active drying
2 Foldable racks on upper basket
Flow-Through Heater
3 way Euro Filtering System

CODE ID **F4DWS24FI1 + F6UHK24DISH**



OVERLAY DISHWASHER 24"
with PROFESSIONAL HANDLE KIT

14 Place Settings
6 Programs
49 dB(A)
Super active drying
2 Foldable racks on upper basket
Flow-Through Heater
3 way Euro Filtering System

CODE ID **F4DWT24FI1 + F6UHK24DISH**

48"- 36"- 30" PROFESSIONAL RANGE - COLOR DOOR KITS



BLACK VELVET Matte Black - RAL 9004
48" PRO RANGE DOOR CODE ID **PDRKIT48MB**
36" PRO RANGE DOOR CODE ID **PDRKIT36MB**
30" PRO RANGE DOOR CODE ID **PDRKIT30MB**



GONDOLA BLACK Glossy Black - RAL 9004
48" PRO RANGE DOOR CODE ID **PDRKIT48BK**
36" PRO RANGE DOOR CODE ID **PDRKIT36BK**
30" PRO RANGE DOOR CODE ID **PDRKIT30BK**



RIALTO GREY Matte Grey - RAL 9007 "Slate"
48" PRO RANGE DOOR CODE ID **PDRKIT48MG**
36" PRO RANGE DOOR CODE ID **PDRKIT36MG**
30" PRO RANGE DOOR CODE ID **PDRKIT30MG**



VENETIAN RED Glossy Red - RAL 3003
48" PRO RANGE DOOR CODE ID **PDRKIT48RD**
36" PRO RANGE DOOR CODE ID **PDRKIT36RD**
30" PRO RANGE DOOR CODE ID **PDRKIT30RD**



CANOVA WHITE Matte White - RAL 9016
48" PRO RANGE DOOR CODE ID **PDRKIT48MW**
36" PRO RANGE DOOR CODE ID **PDRKIT36MW**
30" PRO RANGE DOOR CODE ID **PDRKIT30MW**



PALLADIO WHITE Glossy White - RAL 9016
48" PRO RANGE DOOR CODE ID **PDRKIT48WH**
36" PRO RANGE DOOR CODE ID **PDRKIT36WH**
30" PRO RANGE DOOR CODE ID **PDRKIT30WH**

SOFIA PROFESSIONAL OPTIONAL ACCESSORIES

30" PRO DOUBLE OVEN - COLOR DOOR KITS



BLACK VELVET Matte Black - RAL 9004
30" Pro Upper Door CODE ID **PODKIT30MB**
30" Pro Range Lower Door CODE ID **PDRKIT30MB**

GONDOLA BLACK Glossy Black - RAL 9004
30" Pro Upper Door CODE ID **PODKIT30BK**
30" Pro Range Lower Door CODE ID **PDRKIT30BK**



RIALTO GREY Matte Grey - RAL 9007 "Slate"
30" Pro Upper Door CODE ID **PODKIT30MG**
30" Pro Range Lower Door CODE ID **PDRKIT30MG**

VENETIAN RED Glossy Red - RAL 3003
30" Pro Upper Door CODE ID **PODKIT30RD**
30" Pro Range Lower Door CODE ID **PDRKIT30RD**



CANOVA WHITE Matte White - RAL 9016
30" Pro Upper Door CODE ID **PODKIT30MW**
30" Pro Range Lower Door CODE ID **PDRKIT30MW**

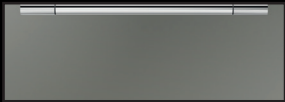
PALLADIO WHITE Glossy White - RAL 9016
30" Pro Upper Door CODE ID **PODKIT30WH**
30" Pro Range Lower Door CODE ID **PDRKIT30WH**

30" WARMING DRAWERS - COLOUR KIT



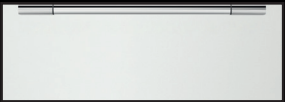
30" Warming drawers CODE ID **PWDKIT30MB**
BLACK VELVE Matte Black - RAL 9004

30" Warming Drawers CODE ID **PWDKIT30BK**
GONDOLA BLACK Glossy Black - RAL 9004



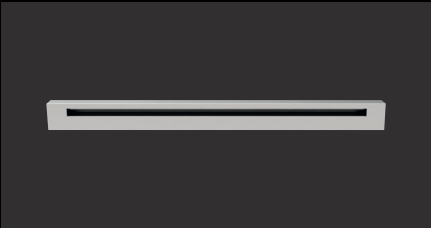
30" Warming Drawers CODE ID **PWDKIT30MG**
RIALTO GREY Matte Grey - RAL 9007 "Slate"

30" Warming Drawers CODE ID **PWDKIT30RD**
VENETIAN RED Glossy Red - RAL 3003



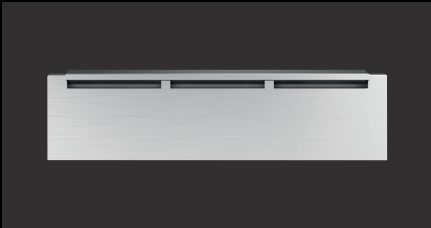
30" Warming Drawers CODE ID **PWDKIT30MW**
CANOVA WHITE Matte White - RAL 9016

30" Warming Drawers CODE ID **PWDKIT30WH**
PALLADIO WHITE Glossy White - RAL 9016



PROFESSIONAL STAINLESS BACK GUARD TRIM

48" Back Guard - 3" Standard Trim CODE ID **F6BG48STD**
36" Back Guard - 3" Standard Trim CODE ID **F6BG36STD**
30" Back Guard - 3" Standard Trim CODE ID **F6BG30STD**



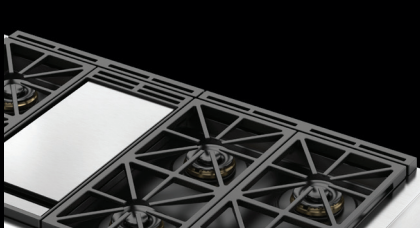
PROFESSIONAL STAINLESS BACK GUARD TRIM

48" Back Guard - High Back Trim CODE ID **F6BG48HBT**
36" Back Guard - High Back Trim CODE ID **F6BG36HBT**
30" Back Guard - High Back Trim CODE ID **F6BG30HBT**



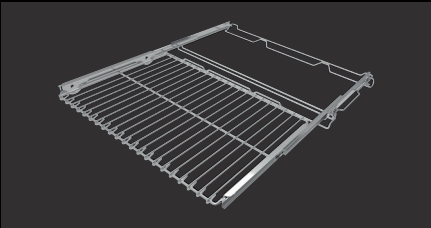
ISLAND TRIM

36" Stainless Steel - 1" High CODE ID **F6BG36ISL**
30" Stainless Steel - 1" High CODE ID **F6BG30ISL**



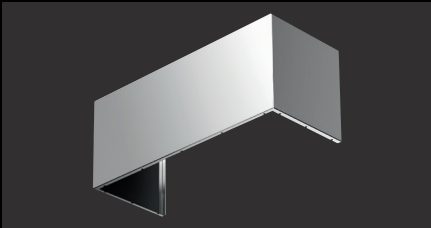
ISLAND TRIM

48" Black Cast Iron - Island Trim CODE ID **F6BG48BCI**
36" Black Cast Iron - Island Trim CODE ID **F6BG36BCI**
30" Black Cast Iron - Island Trim CODE ID **F6BG30HBT**



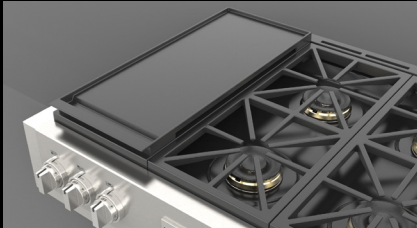
PROFESSIONAL OVEN

36" Telescopic rack CODE ID **FMTRP36**
30" Telescopic rack CODE ID **FMTRP30**
18" Telescopic rack CODE ID **FMTRP18**



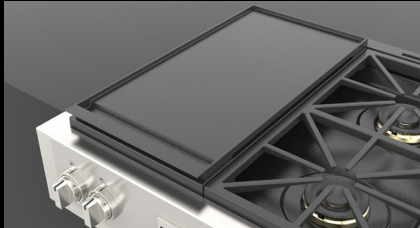
CHIMNEY COVER

48" For model F6PH48S1 12" high CODE ID **F6CK48-12**
36" For model F6PH36S1 12" high CODE ID **F6CK36-12**
30" For model F6PH30S1 12" high CODE ID **F6CK30-12**



CAST-IRON GRIDDLE

36" Heavy Duty Enameled griddle CODE ID **FMGRID36**



CAST-IRON GRIDDLE

30" Heavy Duty Enameled griddle CODE ID **FMGRID30**



CHARCOAL FILTERS

For recirculating installations

CODE ID **FMFIL**



WOK RING

For best results with a wok, use this accessory with high-BTU burner specifically creacted for wok cooking.

CODE ID **FMWOK**



SIMMER PLATE

The cast-iron simmer plate provides a steady simmer temperature, evenly distributed across a stable heating surface.

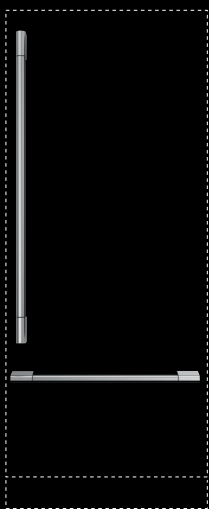
CODE ID **FMSIM**



SOFIA PRO WINE CELLAR HANDLE KIT

Pro Handle Kit for overlay Wine Cellar

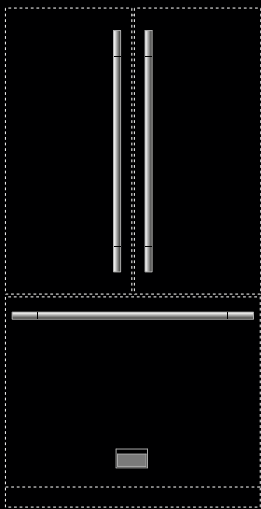
CODE ID **REFHANDPRO24**



SOFIA PRO FRIDGE HANDLE KIT

Pro Handle Kit for overlay Fridge

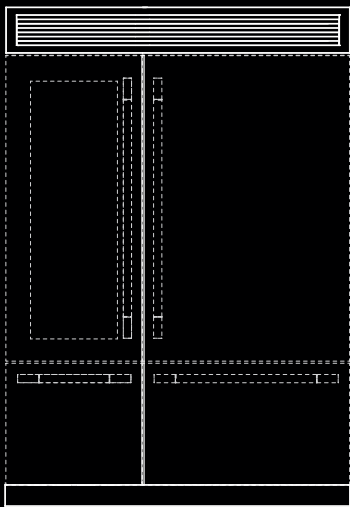
CODE ID **REFHANDPRO36**



PRO FRENCH DOOR FRIDGE HANDLE KIT

Pro Handle Kit for French Door Fridge

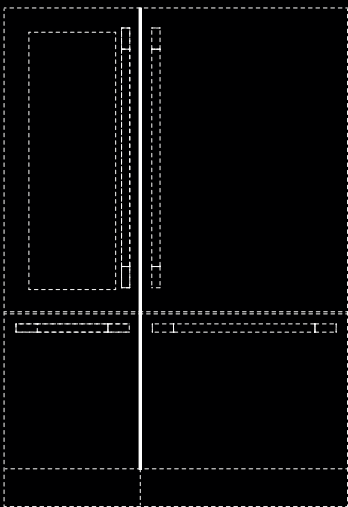
CODE ID **F6HK36FFBS**



24-36" PRO FRIDGE | WINE CELLAR INST. KIT

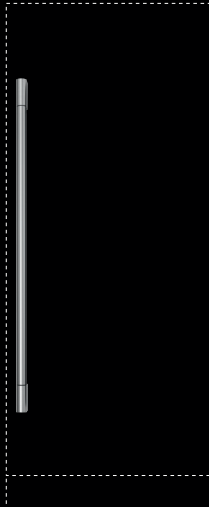
Top Grate, Toe Kick, Vert. Gasket Strip and Insulation Panel

CODE ID **REFSBSPRO60**



24-36" BUILT-IN FRIDGE | WINE CELLAR INST. KIT

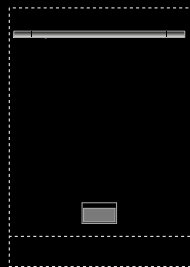
CODE ID **REFBSINT60**



SOFIA PRO COLUMNS FRIDGE HANDLE KIT

Pro Handle Kit for overlay columns products

CODE ID **REFHANDPROCOL**



PRO DISHWASHER HANDLE KIT

Pro Handle Kit for Dishwasher

CODE ID **F6UHK24DISH**

FULGOR
MILANO

ACCENTO PRO RANGE

Inspired by traditional professional styling, our ACCENTO professional range features a classic bullnose design over elegant yet strong knob controls. The ACCENTO professional range will stand out in your kitchen with color kits that allow for an ultimate color expression. Newly designed continuous cast iron grids offer a safe support surface while ensuring the achievement of professional performance and optimal thermal dynamics.



Accento's traditional bull-nose allows this handcrafted range to be added to any package and becomes the perfect replacement range. One piece matte black, porcelain burner bowl allows for seamless, easy cleaning. The matte black is a perfect compliment to the grates and burner caps. Accentuate the satin stainless steel finish of the ACCENTO range with a color kit of your choosing.

ACCENTO

STYLE DETAILS

Adding an "accent" of color has never been easier with Fulgor Milano's unique color kit system for the Accento range. Each color kit comes with a matching door, toe kick and control panel accent trim providing endless possibilities to mix and match. If beauty is in the details, there is no question our new Accento range is ready for the red carpet. From the sculpted lines of the handles and grates, to the symmetry of the lines top to bottom, no detail was overlooked.





ACCENTO

A FRESH CONCEPT, INSPIRED BY TRADITION

The Accento line of professional ranges are inspired by traditional professional ranges but designed to offer exceptional performance and value. Although we offer great value with Accento there is no compromise in the build quality and attention to detail our customers have become accustomed to with all our handcrafted professional style products.



DUAL FUEL RANGE 36"

One piece, matte finish porcelain burner bowl
3 Dual-Flame Crescendo Burners
3 X 18,000 BTU max (NG)
3 Rapid Burners
3 X 15,000 BTU max(NG)
Dual True Convection
Self-cleaning oven with Multifunction baking
Black Porcelain enamel interior
Cool to the touch door (4 Heat Resistant Glasses)
Gross capacity 5.7 cu. ft.
Enameled Broiler Pan

CODE ID **F4PDF366S1**



ALL GAS RANGE 36"

3 Heavy Duty, continuous cast iron grates
One piece, matte finish porcelain burner bowl
3 Dual-Flame Crescendo Burners
3 X 18,000 BTU max (NG)
3 Rapid Burners
3 X 15,000 BTU max (NG)
Dual Convection
Black Porcelain enamel interior
Cool to touch door (4 Heat Resistant Glasses)
Gross capacity 5.7 cu. ft.
Enameled Grill set

CODE ID **F4PGR366S2**



DUAL FUEL RANGE 30"

One piece, matte finish porcelain burner bowl
2 Dual-Flame Crescendo Burners
2 X 18,000 BTU max (NG)
2 Rapid Burners
2 X 15,000 BTU max (NG)
Dual True Convection
Self-cleaning oven with Multifunction baking
Black Porcelain enamel interior
Cool to the touch door (4 Heat Resistant Glasses)
Gross capacity 4.4 cu. ft.
Enameled Broiler Pan

CODE ID **F4PDF304S1**



ALL GAS RANGE 30"

2 Heavy Duty, continuous cast iron grates
One piece, matte finish porcelain burner bowl
2 Dual-Flame Crescendo Burners
2 X 18,000 BTU max (NG)
2 Rapid Burners
2 X 15,000 BTU max (NG)
Dual Convection
Black Porcelain enamel interior
Cool to touch door (4 Heat Resistant Glasses)
Gross capacity 4.4 cu. ft.
Enameled Grill set

CODE ID **F4PGR304S2**

ACCENTO OPTIONAL ACCESSORIES

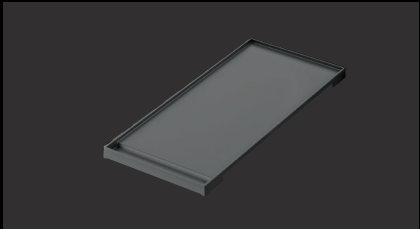
36" - 30" PROFESSIONAL RANGE - COLOR DOOR KITS



BLACK VELVET
36" RANGE
Matte Black - RAL 9004
CODE ID **ACDKIT36MB**



BLACK VELVET
30" RANGE
Matte Black - RAL 9004
CODE ID **ACDKIT30MB**



CAST-IRON GRIDDLE
36" Heavy Duty Enameled griddle CODE ID **FMGRID36**
30" Heavy Duty Enameled griddle CODE ID **FMGRID30**



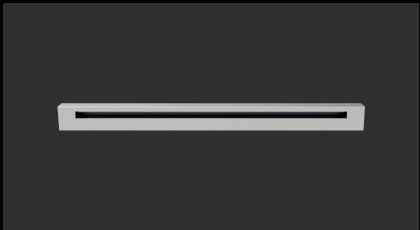
ISLAND TRIM
36" Stainless Steel - 1" High CODE ID **F6BG36ISL**
30" Stainless Steel - 1" High CODE ID **F6BG30ISL**



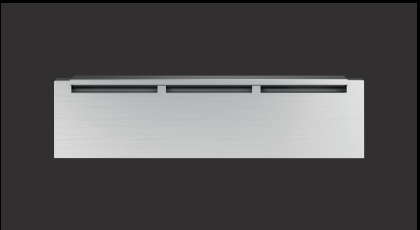
CANOVA WHITE
36" RANGE
Matte White - RAL 9016
CODE ID **ACDKIT36MW**



CANOVA WHITE
30" RANGE
Matte White - RAL 9016
CODE ID **ACDKIT30MW**



PROFESSIONAL STAINLESS BACK GUARD TRIM
36" Back Guard - 3" Standard Trim CODE ID **F6BG36STD**
30" Back Guard - 3" Standard Trim CODE ID **F6BG30STD**



PROFESSIONAL STAINLESS BACK GUARD TRIM
36" Back Guard - High Back Trim CODE ID **F6BG36HBT**
30" Back Guard - High Back Trim CODE ID **F6BG30HBT**



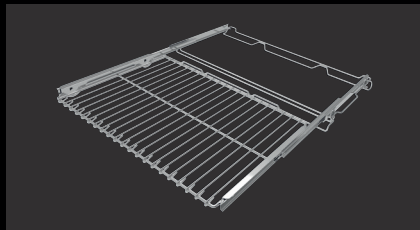
VENETIAN RED
36" RANGE
Glossy Red - RAL 3003
CODE ID **ACDKIT36RD**



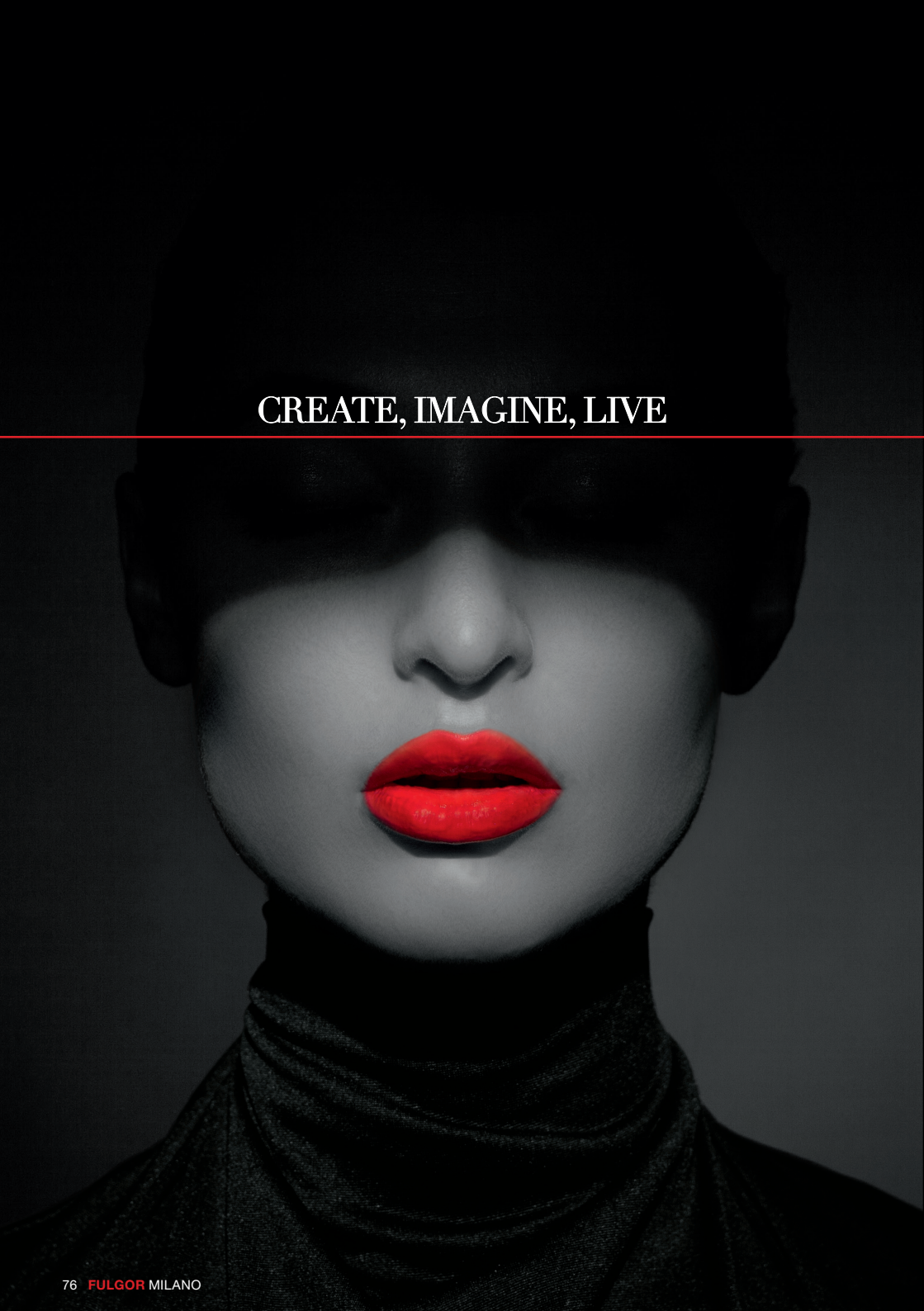
VENETIAN RED
30" RANGE
Glossy Red - RAL 3003
CODE ID **ACDKIT30RD**



WOK RING
Use this accessory with high-BTUs burner.
CODE ID **FMWOK**



PROFESSIONAL OVEN
36" Telescopic rack CODE ID **FMTRP36**
30" Telescopic rack CODE ID **FMTRP30**



CREATE, IMAGINE, LIVE

FULGOR
MILANO

DISTINTO

LINE

This powerful line of products that has, in essence, modularity and the linear stroke of its distinctive features. Like a chef who moves with ease and grace in the kitchen, intuitive displays allow simple recall of recipes and specialties.

The functionality of these new ovens equally matches our modern lifestyle, effortlessly allowing us to make the most of our culinary creations. This new standard is the symbol of modernity, created in Italy.

Limited on space but not interested in compromising your cooking experience? The Distinto Compact Column can be created by combining three exclusive cooking units in a single compact wall oven cabinet.

DISTINTO COMPACT COLUMN 24"



COMBI STEAM OVEN

Our new Fulgor Milano 1.3 cu ft built-in Combi Steam oven gives you a healthy alternative for cooking your favorite foods. This oven can also be used as a steam cooker, a full function oven or a combination of steam and convection heat are used together to provide perfect results.

CONVECTION OVEN

The new 24" Distinto Full Function convection oven is bigger than you think and features our easy to use and intuitive touch controls and is a perfect compliment to the other 24" Distinto built-in cooking products.

WARMING DRAWER

The Distinto compact warming drawer is a perfect compliment to any kitchen and integrates seamlessly.





24" COUNTER-TOP MICROWAVE

Complete your Fulgor Milano appliance package with our cost effective and versatile built-in microwave and 30" trim kit. The 2 cubic-foot capacity microwave features 10 power levels, multiple cooking modes, timer and sensors for reheating and defrosting.



24" DRAWER MICROWAVE

This built-in drawer microwave has elegant edge to edge glass and hidden controls. The 1.2 cu. ft. drawer is tall enough for an average 20 oz mug cup and up to a 4 qt. casserole dish. The drawer may be installed in an island or below a wall oven in a flush install without impacting the built-in venting.

FULGOR
MILANO

MICROWAVES

The Fulgor Milano microwaves, with their stainless steel aesthetics, are the perfect choice for a modern style kitchen and they spouse perfectly with our other appliances. Every aspect of these products is designed to reflect the elegance and uniqueness of the Italian style.



30" OVER-THE-RANGE MICROWAVE

Our 30", 1.8 cubic-foot capacity over the range microwave features a contemporary "no handle" design which allows this unit to be used in combination with either our Distinto line or Professional styled products. Three-speed ventilation provides up to 450 CFM of extraction.

FULGOR
MILANO

DISTINTO COFFEE MACHINE

Our built-in coffee machine is your personal barista; from storing coffee beans and grinding fresh beans for brewing, to automatically storing puck-grounds in the waste bin.

Enjoy barista-style coffee at home, from espresso and cappuccinos, to your favorite Americano at the touch of a button. This made in Italy, professional quality coffee machine is easy to use and the perfect complement to your Fulgor Milano Italian cooking products.



30" Distinto style Frame kit is available. This unique frame kit allows our unit to be installed in combination with our other 30" built-in Distinto products.



Shown in the above image is our unique low profile Distinto trim kit. This accessory allows our built-in coffee machine to be installed over our other Distinto built-in products, for a seamless look.



Our coffee machine is also available in a black glass finish. The 24" Distinto built-in coffee machine allows for a smaller footprint when installed on its own.



FULGOR
MILANO

DISTINTO CHIMNEY WALL HOODS

Fulgor Milano has now added an elegant pyramid style chimney wall hood which features the same quality and finish you have come to expect. Like so many of our products this stylish vent hood will offer the power required to do the job and features elegant baffle style filters expected in a professional style product. Available in both 30" and 36" widths, both hoods come standard with 600 CFM performance but feature a power damping system to meet local code requirements for lower CFMs if needed.





SINGLE OVEN 30"
Creative Touch Control System
Dual True Convection
Self-cleaning oven (Multif. baking)
Black Porcelain enamel interior
Cool to the touch
Gross capacity 4.4 cu. ft.

Stainless Steel
CODE ID **F7SP30S1**



Black Glass
CODE ID **F7SP30B1**



White Glass
CODE ID **F7SP30W1**



WARMING DRAWER 30"
S. Steel Door - Knob Control
Heavy Duty full extendable telescopic rails
Large capacity 2,1 cu. ft.
Convection heating system
Warming Temperature range; 86 °F/190 °F
Push-Pull system to open and close door

CODE ID **F7DWD30S1**



COMBI SPEED OVEN 30"
3 in 1 Oven - Microwave,
Convection, and Combination
True Convection
Stainless Interior with broiler
Quick Access Menu
Automatic Programs
240 Volt Connection

CODE ID **F7DSPD30S1**



COMBI SPEED OVEN 24"
3 in 1 Oven - Microwave,
Convection, and Combination
True Convection
Stainless Interior with broiler
Quick Access Menu
Automatic Programs
240 Volt Connection

CODE ID **F7DSPD24S1**



SELF-CLEANING OVEN 24"
15 cooking modes
Automatic cooking
True Convection
Sabbath mode
BOOST to rapidly reach the
pre-selected temperature
PYROLYSIS Self-cleaning

CODE ID **F7SP24S1**



DOUBLE OVEN 30"
Creative Touch Control System
Dual True Convection
Self-cleaning oven (Multif. baking)
Black Porcelain enamel interior
Cool to the touch
Gross capacity 4.4 cu. ft.

Stainless Steel
CODE ID **F7DP30S1**



Black Glass
CODE ID **F7DP30B1**



White Glass
CODE ID **F7DP30W1**



WARMING DRAWER 30"
Overlay Panel - Knob Control
Heavy Duty full extendable telescopic rails
Large capacity 2,1 cu. ft.
Convection heating system
Warming Temperature range; 86 °F/190 °F
Push-Pull system to open and close door

CODE ID **F7IWD30O1**



BUILT-IN COFFEE MACHINE 30"
30" Distinto Style Frame Kit
Whole Bean Coffee Grinder
Dual Boiler, Dual Dispensing Spouts
Coffee/Esspresso Brewing
Cappuccino Option
Cappuccino Option
Frothing System / Hot Water Dispenser

CODE ID **F7BC24B1 + F7DTK30BC**



BUILT-IN COFFEE-MACHINE 24"
Whole Bean Coffee Grinder
Dual Boiler, Dual Dispensing Spouts
Coffee/Esspresso Brewing
Cappuccino Option
Frothing System
Hot Water Dispenser

CODE ID **F7BC24S1**



BLACK GLASS 24"
Whole Bean Coffee Grinder
Dual Boiler, Dual Dispensing Spouts
Coffee/Esspresso Brewing
Cappuccino Option
Frothing System
Hot Water Dispenser

CODE ID **F7BC24B1**



COMBI STEAM OVEN 30"
CREACTIVE operating system
Magnetic water filter
True Convection
Stainless steel interior
Internal capacity 1.2 cu.ft (34 litres)
Cool to the Touch Door
Double Control panel (with lock key)

CODE ID **F7DSC030S1**



COMBI STEAM OVEN 24"
CREACTIVE operating system
Magnetic water filter
True Convection
Stainless steel interior
Internal capacity 1.2 cu.ft (34 litres)
Stainless Steel Trim Frame 30" Optional
(code ID F7TDK30SO)

CODE ID **F7SCO24S1**



WARMING DRAWER 24"
S. Steel Door
Knob Control
Heavy Duty full extendable telescopic rails
Convection heating system
Warming Temperature range; 86 °F/190 °F
Push-Pull system to open and close door

CODE ID **F4DWD24S1**



OVER-THE-RANGE MW 30"
10 Power Levels
White LED Display & Digital Clock
Digital Timer
Display On/Off (controlled via Clock key)
Removable Glass Turntable

CODE ID **F4OTR30S1**



DRAWER MW 24"
Stainless steel design
Modern edge-to-edge black glass
LED interior lighting
Touch glass control
Built-in airflow control for flush mounting

CODE ID **F7DMW24S2**



COUNTER-TOP MW 24"
11 Power Levels
Electronic Touch Control
Super Defrost
Sensor Cook Menu
Auto Start
Child Lock

CODE ID **F4MW024S1**



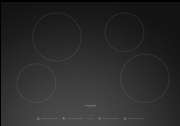
INDUCTION COOKTOP 36"
5 Induction cooking zones
One 11" large zone
Bridge zone on the right side
A subtle elegant aluminum trim
Elegant Ceramic glass surface
Melt and Simmering Functions
Residual heat led
Digital Minute Minder

CODE ID **F7IT36S1**



INDUCTION COOKTOP 30"
4 Induction cooking zones
One 11" large zone
Premium Induction Technology
A subtle elegant aluminum trim
Elegant Ceramic glass surface
Melt and Simmering Functions
Residual heat led
Digital Minute Minder

CODE ID **F7IT30S1**



INDUCTION COOKTOP 30"
4 Induction cooking zones
Performance Induction Technology
Durable Ceramic glass surface
Residual heat led
Power On Indicators
Digital Minute Minder

CODE ID **F4IT30S2**



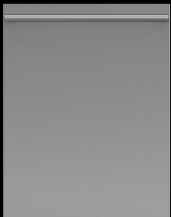
INDUCTION COOKTOP 24"
4 Induction cooking zones
Performance Induction Technology
Durable Ceramic glass surface
Residual heat led
Power On Indicators
Digital Minute Minder

CODE ID **F4IT24S2**



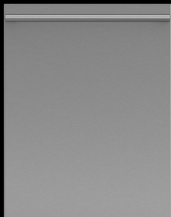
FRENCH DOOR FRIDGE 36"
with DISTINTO HANDLE KIT
Duo Cycling Cooling
Ion Fresh
Inner Digital Display, Sabbath Mode
Large Pantry Drawer
Height Adjustable Cantilever Shelves
Interior Filtered Water Dispenser
Interior Theatre Lighting with LED lights
Automatic Ice Machine

CODE ID **F6FBM36S2+**
F7HK36FFBS



S. STEEL DISHWASHER 24"
with DISTINTO HANDLE KIT
16 Place Settings
6 Programs
45 dBA Silent Operations
Flexible Rack Loading
Single tablet Detergent Function
Fast Function, 5 Level Wash
Flow Through Heater
3 way Euro Filtering System

CODE ID **F6DWT24SS2+**
F7HK24DISHS



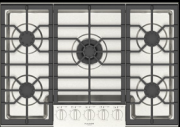
S. STEEL DISHWASHER 24"
with DISTINTO HANDLE KIT
14 Place Settings
6 Programs
49 dBA
Super active drying
4 Foldable racks on upper basket
Flow Through Heater
3 way Euro Filtering System

CODE ID **F4DWT24SS1+**
F7HK24DISHS



GAS COOKTOP 36"
3 Heavy duty continuous cast iron grates
Heavy Gauge 304 Stainless Steel Burner Bowl
1 Aluminum Dual Flame Burner
2 Aluminum Stacked Burners
1 Aluminum Rapid Burners
1 Aluminum Semirapid Burners

CODE ID **F4PGK36S1**



NEW GAS COOKTOP 30"
3 Heavy duty continuous cast iron grates
Heavy Gauge 304 Stainless Steel Burner Bowl
1 Aluminum Dual Flame Burner 20K BTU Max (NG)
2 Aluminum Semirapid Burners 8K BTU Max (NG)
2 Aluminum Semirapid Burners 6.3K BTU Max (NG)

CODE ID **F4PGK30S2**



CHIMNEY WALL HOOD 36"
Scotch Brite Stainless Steel (AISI 430)
Electronic Control
Motor 600 CFM
Baffle Filter
2 LED lighting

CODE ID **F4CW36S1**



CHIMNEY WALL HOOD 30"
Scotch Brite Stainless Steel (AISI 430)
Electronic Control
Motor 600 CFM
Baffle Filter
2 LED lighting

CODE ID **F4CW30S1**



OVERLAY DISHWASHER 24"
with DISTINTO HANDLE KIT
14 Place Settings
6 Programs
49 dB(A)
Super active drying
2 Foldable racks on upper basket
Flow-Through Heater
3 way Euro Filtering System

CODE ID **F4DWT24FI1+**
F7UHK24DISH



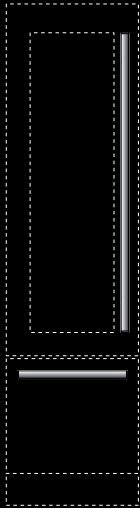
OVERLAY DISHWASHER 24"
with DISTINTO HANDLE KIT
14 Place Settings
6 Programs
49 dB(A)
Super active drying
2 Foldable racks on upper basket
Flow-Through Heater
3 way Euro Filtering System

CODE ID **F4DWS24FI1+**
F7UHK24DISH



OVERLAY DISHWASHER 18"
10 Place Settings
6 Programs
49 dB(A)
Super active drying
2 Foldable racks on upper basket
Flow-Through Heater
3 way Euro Filtering System

CODE ID **F4DWS18FI1**

**DISTINTO WINE CELLAR HANDLE KIT**

Distinto Handle Kit
Overlay Wine Cellar

CODE ID **REFHANDIS24**

**DISTINTO FRIDGE HANDLE KIT**

Distinto Handle Kit
Overlay Fridge

CODE ID **REFHANDIS36**

**DISTINTO COLUMNS HANDLE KIT**

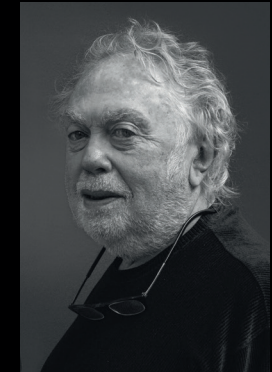
Distinto Handle Kit
Overlay columns products

CODE ID **REFHANDISCOL**

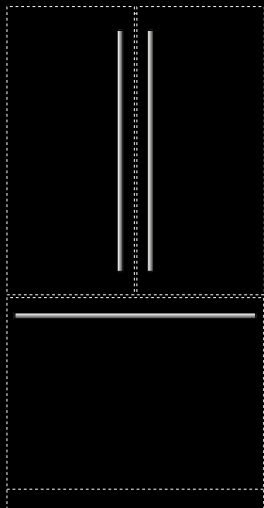
**UGO MARINELLO**

IDA Award winning designer Ugo Marinello is passionate about his work and his desire to synthesize modern rationality with traditional design.

A graduate of IUAV in Venice, he draws inspiration from the unique architecture of that city, using it as a foundation to bring innovative yet timeless design and quintessential Italian spirit to your home and kitchen throughout the Fulgor Milano line.

**ALFRED HENDRICKX**

Known internationally for his mid-century furniture collections, designer Alfred Hendrickx began incorporating the strong lines of industrial styling and materials like stainless steel early in his career. After many successful design collaborations in Europe, he turned his attention to the design of household appliances, notably marrying modern form and function for Meneghetti and Fulgor Milano.

**DISTINTO FRENCH DOOR FRIDGE HANDLE KIT**

Distinto Handle Kit
French Door Fridge

CODE ID **F7HK36FFBS**

**DISTINTO DW HANDLE KIT**

Distinto Handle Kit
Dishwasher

CODE ID **F7UHK24DISH**

Every effort is made to ensure the information in this catalog is accurate at the time of publication.

For the most up-to-date information of any of the products or accessories in this catalog, please visit www.fulgor-milano.us
Meneghetti S.p.a. reserves the right to make updates to the information and products or discontinue models contained in this catalog without notice

FULGOR
MILANO

A FAMILY A PASSION



There are few places in the world where food has been the very backbone of a culture like it has been in Italy for centuries. A passion for cooking, creating and using local ingredients, has inspired generations of Italian families and has made the kitchen the heart of the home. The aroma of long hours of food preparation, tables filled with recipes handed down generation to generation, accompanied with the perfect local wine are moments that linger in our memories and give us a sense of home even when we are far away. These things are what being Italian is all about. The Meneghetti Family has brought us the Fulgor Milano line of products so that we too may be inspired to cook and create with this same passion at home. Every Fulgor Milano product has been designed and developed to not only meet or exceed expectations of performance and quality, but also provide a design that is uniquely Italian.

MORE INFO



www.fulgor-milano.com - info@fulgor-milano.com

Every effort is made to ensure the information in this catalog is accurate at the time of publication.
For the most up-to-date information of any of the products or accessories in this catalog, please visit www.fulgor-milano.us
Meneghetti S.p.a. reserves the right to make updates to the information and products or discontinue models contained in this catalog without notice