

RADIANT COOKTOP 300 SERIES 30"



CODE ID

30" RADIANT COOKTOP WITH KNOB CONTROL WITH BRUSHED ALUMINUM TRIM

F3RK30S2



Easy Clean Ceramic Glass



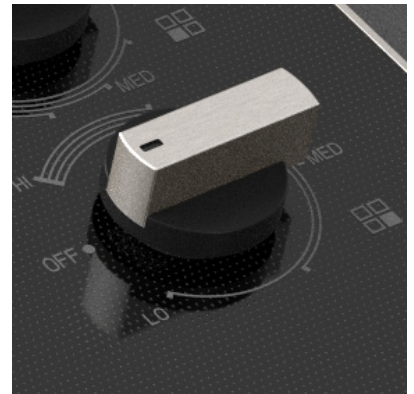
Double Radiant



Residual Heat Sensor



Frame Creative



RADIANT COOKTOP

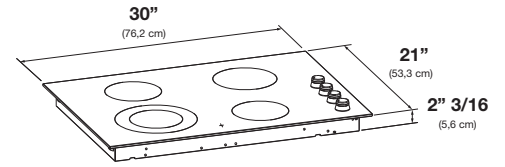
Power on Indication
Hot surface Indication



This product meets ADA (Americans with Disabilities Act) requirements. Please check with your local municipality's codes and stipulations for additional details to ensure compliance.

DISTINTO

300 SERIES 30" RADIANT COOKTOP
LATERAL KNOBS



CODE ID		F3RK24S2 - 300 SERIES 30" RADIANT COOKTOP LATERAL KNOBS
Size		30"
Colour		Black
Heating Technology		Radiant Heaters
Glass Type		Glass Ceramic
Frame		YESS
Control type		Knobs
CONTROL FEATURES		
Knobs for power level setting		4
Hot Surface indication		•
Residual heat indication		•
FRONT LEFT ZONE		
Size		9" / 6"
Power		2500W / 1100W
REAR LEFT ZONE		
Size		6"
Power		1200W
REAR RIGHT ZONE		
Size		7"
Power		1800W
FRONT RIGHT ZONE		
Size		6"
Power		1200W
DIMENSIONS/WEIGHT - (IN OR LBS)		
Overall dim - width		30" (762mm)
Overall dim - height		2 3/16" (56mm)
Overall dim - depth		21" (533mm)
Cutout - width (min-max)		28 11/16" (729mm) - 28 15/16" (735mm)
Box - height		2" (50,8mm) + conduit 15/16" (24mm)
Cutout - depth (min-max)		19 1/4" (490mm) - 19 9/16" (497mm)
Approx ship weight		13.5 Kg (30Lbs)
POWER / RATINGS (208/240 V, 60 HZ)		
KW/Amps rating at 240V, 60Hz		6.700kW 27.9A 6.700kW - 27.9A
KW/Amps rating at 208V, 60Hz		5.032kW - 24.19A
Cable + Conduit		•
INSTRUCTIONS FOR USE		
Use & Care Manual		EN, SP, FR
Installation Manual		EN, SP, FR