

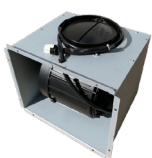
## On-Board Motor

FDD 2 M LIFT FHDD

- Max flow rate 790 m<sup>3</sup>/h
- Noise min-max 39-68 dB(A)
- Annual consumption (kWh) 51.9
- Maximum motor power 275 W
- Energy class A

## FEATURES

The on-board Motor is a model compatible exclusively with Fulgor LIFT Downdraft series hoods and allows them to operate in filter or extraction mode.



STAINLESS STEEL  
FDD 2 M LIFT FHDD  
EAN 8019801023400