



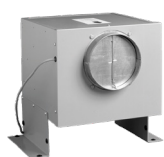
Internal Fan Motor

FEM 1

- Stainless Steel Finish
- Air Flow Ø 150 mm
- Annual consumption 50.5 kWh/a
- Easy Installation

FEATURES

The indoor remote hood motor is the advanced solution for an effective kitchen ventilation. This compact and powerful device, installed inside the hood, is designed to provide maximum efficiency in removing vapors, odors and fumes during cooking. Thanks to its internal design, the remote motor ensures quiet operation, giving a pleasant and disturbance-free cooking experience.



STAINLESS STEEL
FEM 1
EAN 8019801023325